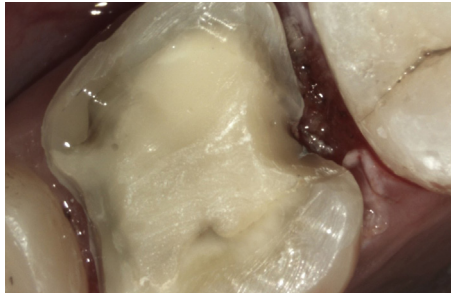


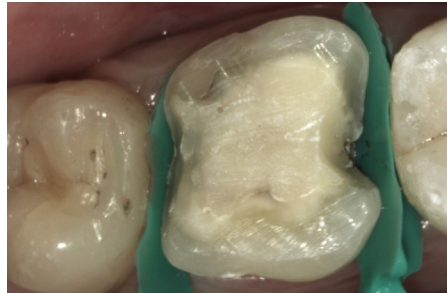
How to build-up subgingival margins

See how to use the OVC wedges to build up deep subgingival margins prior to placement of the McDonald Matrix Band.

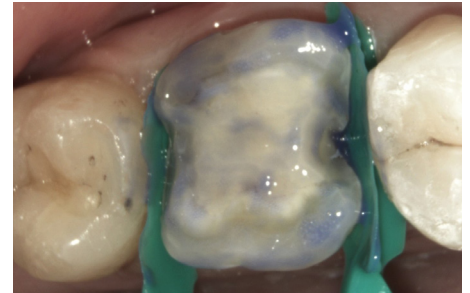
Case One



A. Prep tooth.



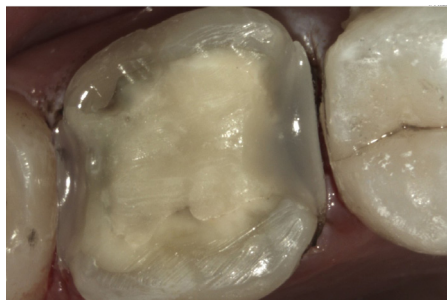
B. Insert OVC Wedges.



C. Etch and bond.



D. Build up the subgingival margins.

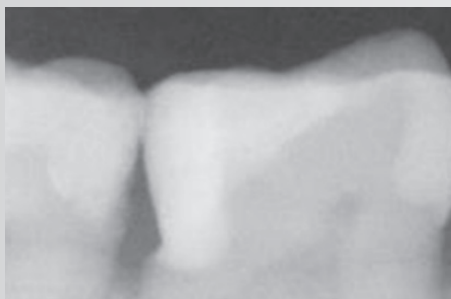


E. Remove OVC Wedges.



F. Place McDonald Matrix Band and complete OVC procedure as normal.

Case Two



A. Radiograph prior to treatment.



B. Tooth prepped and large OVC wedge inserted.



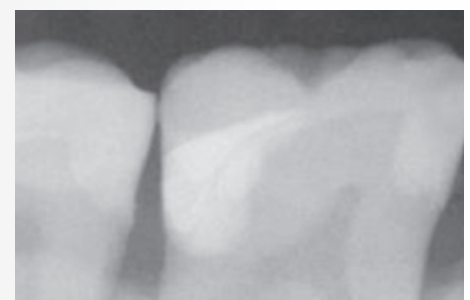
C. Deep box built up with composite.



D. Ready for McDonald Matrix Band placement.



E. OVC after finishing, polishing and staining.



F. Final radiograph.