

Chairside Guide McDonald Matrix Band Technique

Please ensure you have viewed the full instructions for use prior to using this guide.
At consultation take a dual arch PVS impression using fast set bite impression material and send this to the lab.



1 Prep

Prep the tooth, allow at least 1 mm of clearance in the central fossa.



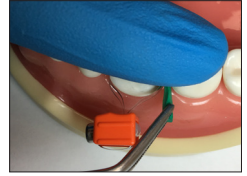
2 Open case

The OVC is in the lid.



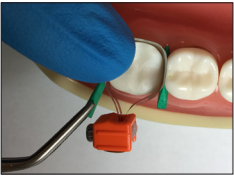
3 Occlusal check

Check occlusal clearance with Occlusal Reduction Guide.



4 Place matrix band

Secure matrix band in place with a wedge on distal side.



5 Secure

Place wedge on mesial side to secure matrix band completely.



6 Tighten band

Hold orange toggle with thumb or forceps while tightening with Hex Stick.



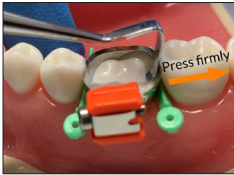
7 Burnish

Burnish contact points, make sure matrix band touches adjacent teeth.



8 Etch and bond

Etch and bond as you would any composite restoration.



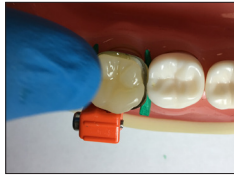
9 Build contacts

Place flowable around margins and push firmly with contact tool and cure.



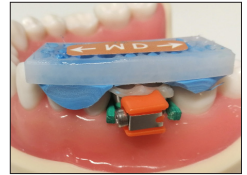
10 Seal margins

Repeat with other contact and around matrix margin.



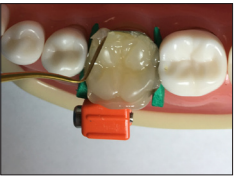
11 Place OVC

Apply flowable to prep and don't cure. Place and squash down OVC onto prep.



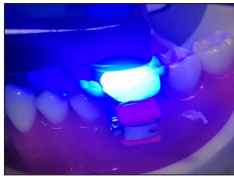
12 Align OVC

Align with OVC Seating Guide.



13 Clean excess

Remove any excess material and use Seating Guide once more to re-align.



14 Final cure

20s each surface while air cooling then remove wedges and matrix band.



15 Trim

Trim and shape OVC into desired shape.



16 Polish

Check bite and polish OVC.