

Chairside Guide

OVC Proximal Wedge Technique

Please ensure you have viewed the full instructions for use prior to using this guide.
At consultation take a dual arch PVS impression using fast set bite impression material and send this to Rhondium Laboratories.



1 Prep

Prep the tooth, allow at least 1 mm of clearance in the central fossa.



2 Open case

The OVC is in the lid.



3 Occlusal check

Check occlusal clearance with Occlusal Reduction Guide.



4 Place wedges

Place OVC Proximal wedges and wooden wedges if necessary.



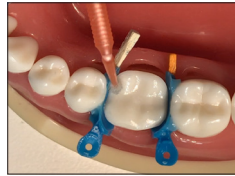
5 Apply Liquid-Wedge

Place Liquid-Wedge around the contact points to shape and fill any voids.



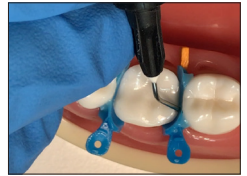
6 Smooth

Smooth and shape the Liquid-Wedge with a sharp instrument then cure.



7 Etch and bond

Etch and bond as you would any composite restoration.



8 Build up

Build up and fill any large voids or deep proximal boxes.



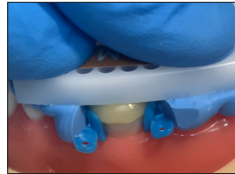
9 Place flowable

Seal interproximal boxes with small amount of flowable composite and cure.



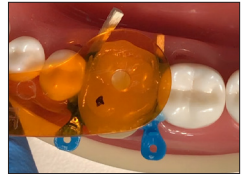
10 Place OVC

Place and squash down OVC onto prep. (Note - small dot on mesial cusp)



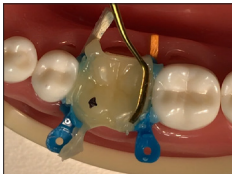
11 Seat OVC

Seat One Visit Crown with OVC Seating Guide.



12 Spot cure

Use spot cure tool to cure the centre of the OVC. (3 seconds)



13 Remove excess

Clean up excess uncured material using a sharp carving instrument.



14 Final cure

20s each surface while air cooling then remove wedges.



15 Trim

Trim and shape OVC with disks ready for polishing.



15 Polish

Check bite and polish OVC.