

# Chairside Guide

## OVC Proximal Wedge Technique

Please ensure you have viewed the full instructions for use prior to using this guide.  
At consultation take a dual arch PVS impression using fast set bite impression material and send this to Rhondium Laboratories.



### 1 Prep

Prep the tooth, allow at least 1 mm of clearance in the central fossa.



### 2 Open case

The OVC is in the lid.



### 3 Occlusal check

Check occlusal clearance with Occlusal Reduction Guide.



### 4 Place wedges

Place OVC Proximal wedges and wooden wedges if necessary.



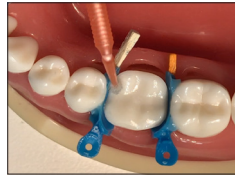
### 5 Apply Kool-Dam

Place Kool-Dam around the contact points to shape and fill any voids.



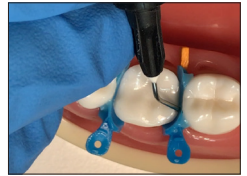
### 6 Smooth

Smooth and shape Kool-Dam with a sharp instrument then cure.



### 7 Etch and bond

Etch and bond as you would any composite restoration.



### 8 Build up

Build up and fill any large voids or deep proximal boxes.



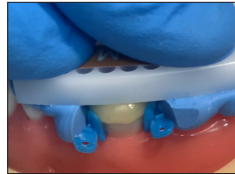
### 9 Place flowable

Seal interproximal boxes with small amount of flowable composite **and** cure.



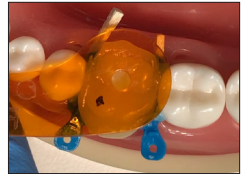
### 10 Place OVC

Place and squash down OVC onto prep. (Note - small dot on mesial cusp)



### 11 Seat OVC

Seat One Visit Crown with OVC Seating Guide.



### 12 Spot cure

Use spot cure tool to cure the centre of the OVC. (3 seconds)



### 13 Remove excess

Clean up excess uncured material using a sharp carving instrument.



### 14 Final cure

20s each surface while air cooling then remove wedges.



### 15 Trim

Trim and shape OVC with disks ready for polishing.



### 15 Polish

Check bite and polish OVC.

# Chairside Guide McDonald Matrix Band Technique

Please ensure you have viewed the full instructions for use prior to using this guide.  
At consultation take a dual arch PVS impression using fast set bite impression material and send this to the lab.



## 1 Prep

Prep the tooth, allow at least 1 mm of clearance in the central fossa.



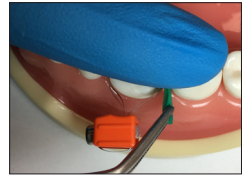
## 2 Open case

The OVC is in the lid.



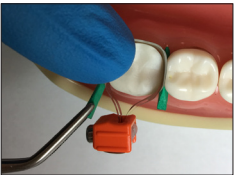
## 3 Occlusal check

Check occlusal clearance with Occlusal Reduction Guide.



## 4 Place matrix band

Secure matrix band in place with a wedge on distal side.



## 5 Secure

Place wedge on mesial side to secure matrix band completely.



## 6 Tighten band

Hold orange toggle with thumb or forceps while tightening with Hex Stick.



## 7 Burnish

Burnish contact points, make sure matrix band touches adjacent teeth.



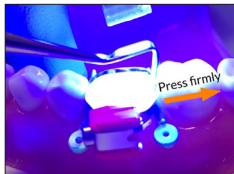
## 8 Etch and bond

Etch and bond as you would any composite restoration.



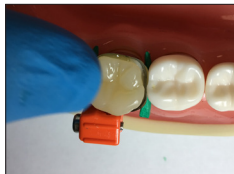
## 9 Build contacts

Place flowable around margins and push firmly with contact tool and cure.



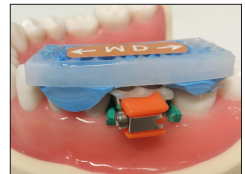
## 10 Seal margins

Repeat with other contact and around matrix margin.



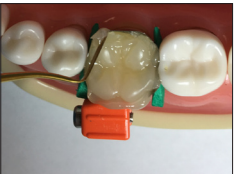
## 11 Place OVC

Apply flowable to prep and don't cure. Place and squash down OVC onto prep.



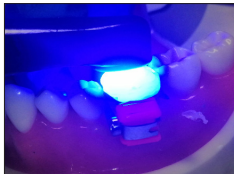
## 12 Align OVC

Align with OVC Seating Guide.



## 13 Clean excess

Remove any excess material and use Seating Guide once more to re-align.



## 14 Final cure

20s each surface while air cooling then remove wedges and matrix band.



## 15 Trim

Trim and shape OVC into desired shape.



## 16 Polish

Check bite and polish OVC.